

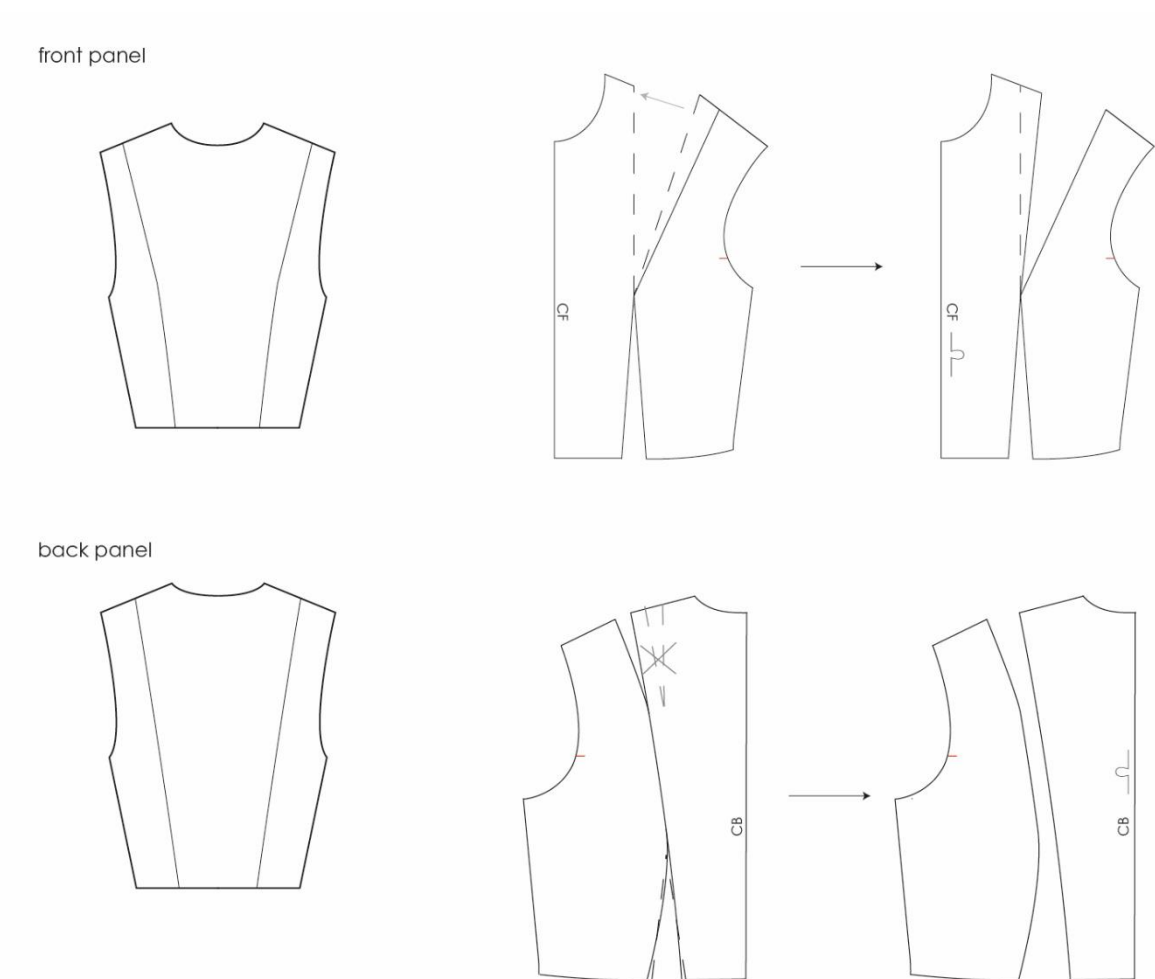


Top with flared hemline

Modify the basic pattern

Use the basic dress pattern to make a top with a flared hemline.

- Adjust the basic pattern to the desired length as learned in a previous lesson.
- Manipulate the dart seams to create panel seams.

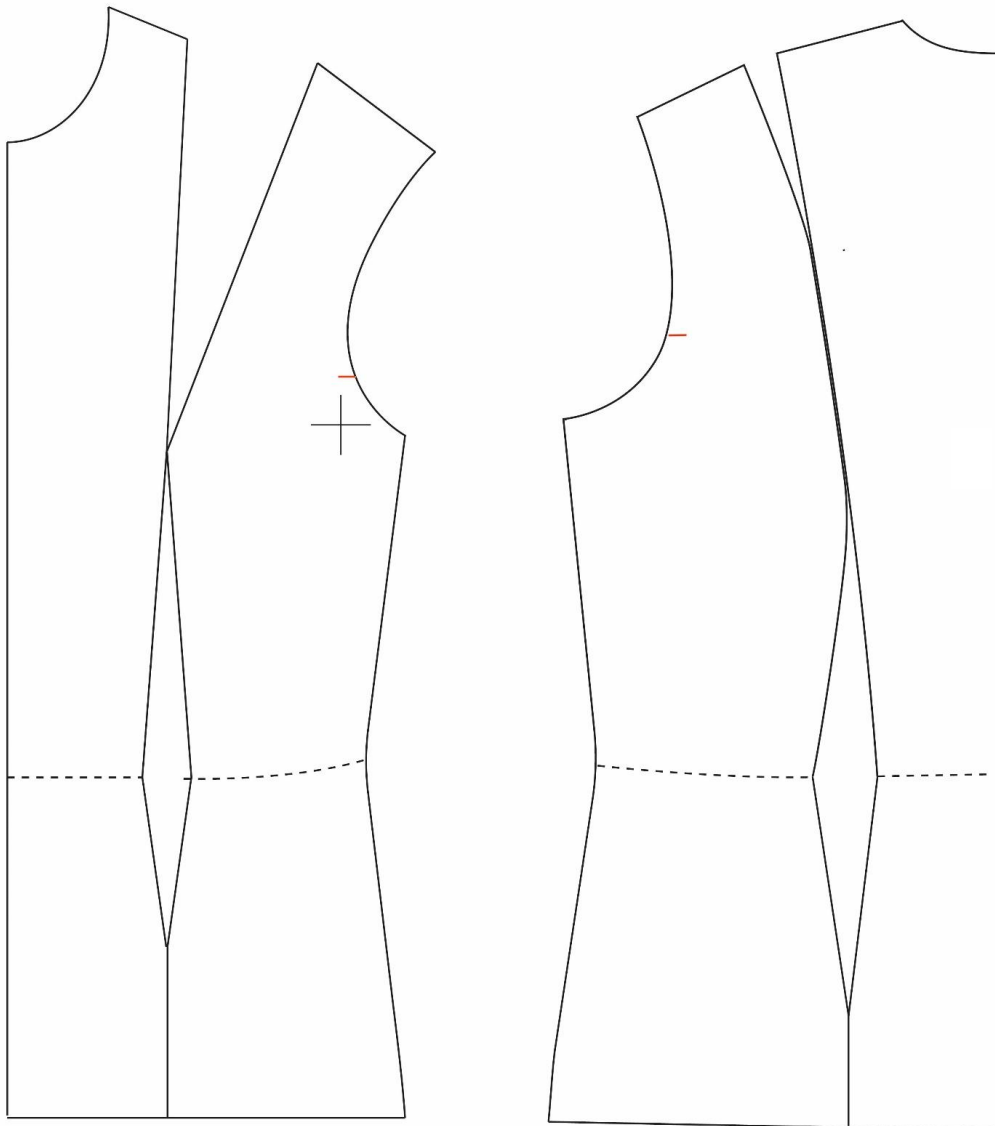


- Draw vertical panel seams from waist to hem.
- Add extra space to the panel seams and the side seams at the hemline. In this example: 5 cm.
- Optional: Add extra space to the CF line and the CB line if they are seams.



- Keep the same length for the side seams and the panel seams as they were. This means that the end points of the side seams and the panel seams will be higher than the original hemline. (See the image on the last page.)
- Redraw the hemline. The hemline ends perpendicular to the side seams and panel seams.
- For each seam, check that the length of a panel seam / side seam is the same as the adjacent seam.
- Trace each pattern piece. Add notches and marks to be able to identify the adjacent pattern piece.

- In the Menu bar, go to **File > Open** to open the file of the basic dress pattern.
- Adjust the basic pattern to the desired length as learned in a previous lesson. In this example the hemline will be raised to the hip line.
- Manipulate the darts as you learned in the previous lesson.



- Select the Selection tool [**V**] from the Tools panel.
- Drag a 'frame' around one half of the front panel to select it.
- Move the pattern piece to add space in between the panel seams. In this example 5 cm of space is added to the seam.
- Repeat for the back panel.
- Select the Direct Selection tool [**A**] from the Tools panel.
- Click on 1 seam with the Direct Selection tool [**A**] to select it.



- In the **Document Info panel > extra options > Objects**, check the length of the seam. Note the value. Repeat for all other seams.

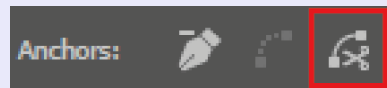
If the seam is connected to another line, cut it first.

To cut the seam:

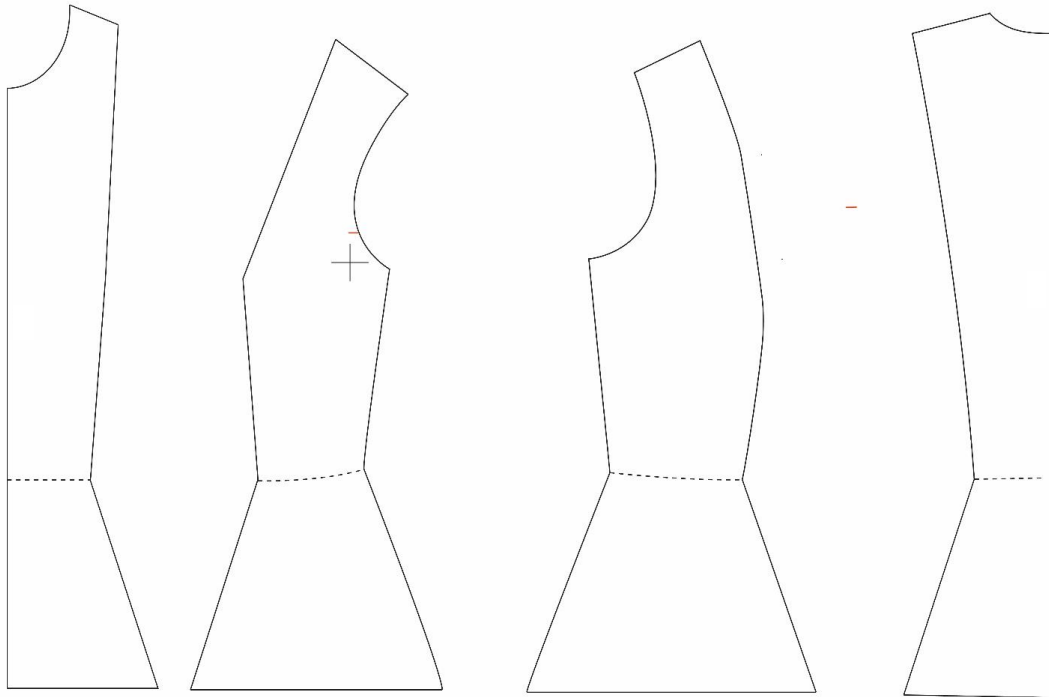
- *Click on the corner of the seam with the Scissors tool to cut the line segments.*

Or...

- *In the Tools panel, select the Direct Selection tool [A].*
- *Click on the corner of the seam to select it.*
- *Then click on the third "Anchors" icon (see image below) in the Options Bar or Properties Panel to cut the line segments.*



- Drag a 'frame' around 1 corner of the hemline to select the lower anchor point of a seam and an outer anchor point of the hemline.
- Press **Enter** to open the Move panel. For **Horizontal** type: **5 cm to move to the right or – 5 cm to move to the left**. For **Vertical** type: **0 cm**. Click **OK**.
- Repeat for all other corners.
- The line segment between the waist and the hip must be straight. If necessary, adjust the line segment with the Direct Selection tool [A].

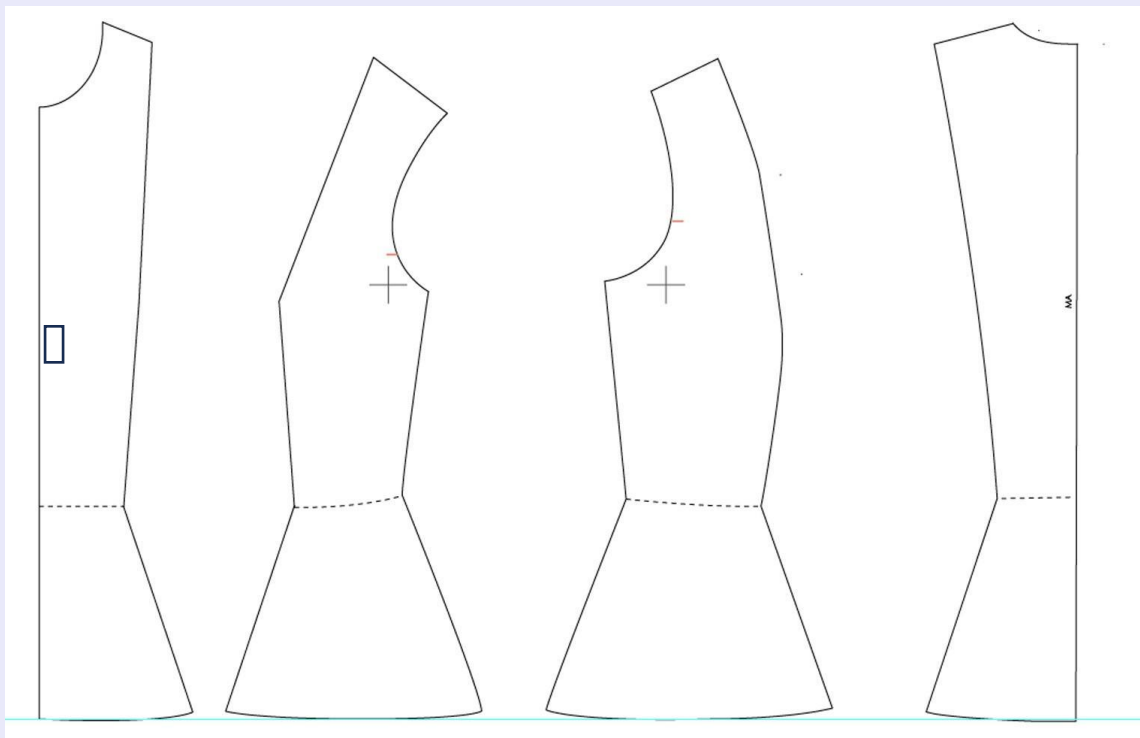


- Click shortcut **Ctrl R** (Mac: Command R) to reveal the rulers.
- Click in the horizontal ruler and drag a ruler to the hemline.
- Click on a line segment of the hemline with the Direct Selection tool [**A**] to select it.
- Click the **Backspace** or **Delete** key to remove it.
- Repeat for the other line segment of the hemline.
- Click on 1 seam with the Direct Selection tool [**A**].
- In the **Document Info panel > extra options > Objects**, check the length of the seam. Compare it to the value you had noted.
- Click on the lower anchor point of the seam to select it.
- Click and drag the anchor point upwards in the same direction as the side seam. Release the left mouse button. Repeat until the length in the Document Info Panel matches the value you have noted.
- Repeat for all other seams.
- Select the Pen tool [**P**] from the Tools panel.



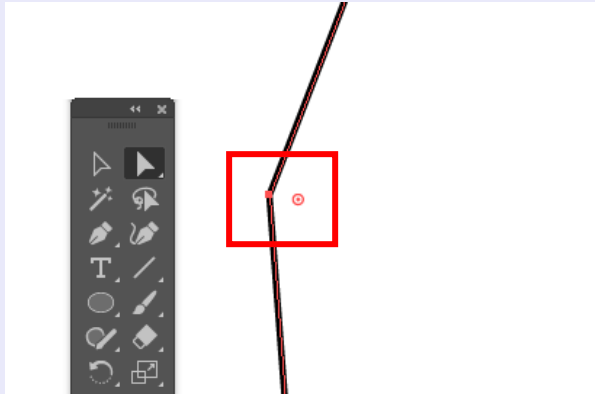
- Click on the lower anchor point of a seam, release the left mouse button.
- Click on the lower anchor point of the opposite seam, hold the left mouse button and drag to create a slightly curved line. Make sure that the handles are perpendicular to the seams.

The hemline is more curved towards the side seams and panel seams than towards the CF and CB lines.



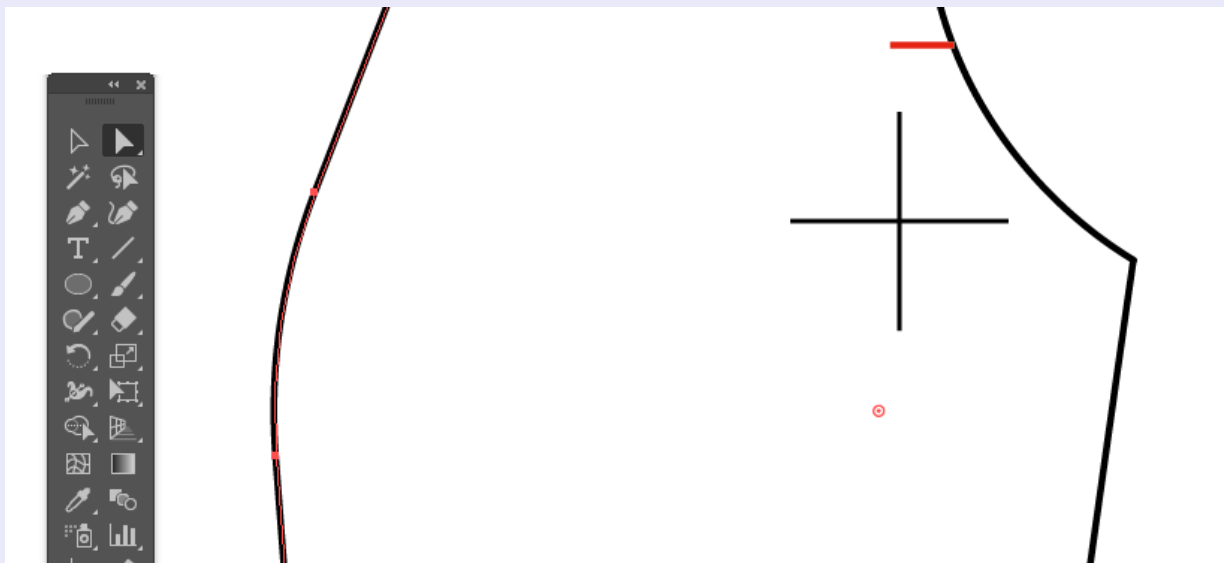
To round the sharp angle at the bust:

- Select the Direct Selection tool [**A**] from the Tools panel.
- Drag a 'frame' around the sharp angle to select it.



- Click shortcut **Ctrl J** (Mac: Command J) to connect the selected anchor points.
- A circle appears. Drag the circle to round the sharp angle.

Note: If the circle does not appear, check that the anchor points of the sharp angle are positioned on top of each other.



- Add the necessary symbols to mark the pattern, from the Symbols Library panel or the Libraries panel.
- Name the pattern using the Type tool [**T**].

