



Darts and seam variations

Top with panel seam variations

Design a top using dart relocation and panel seam variations.
In this lesson you will find all kinds of examples.

See if you are now skilled enough to change your pattern on your own.

Tip: Use these Illustrator tools:

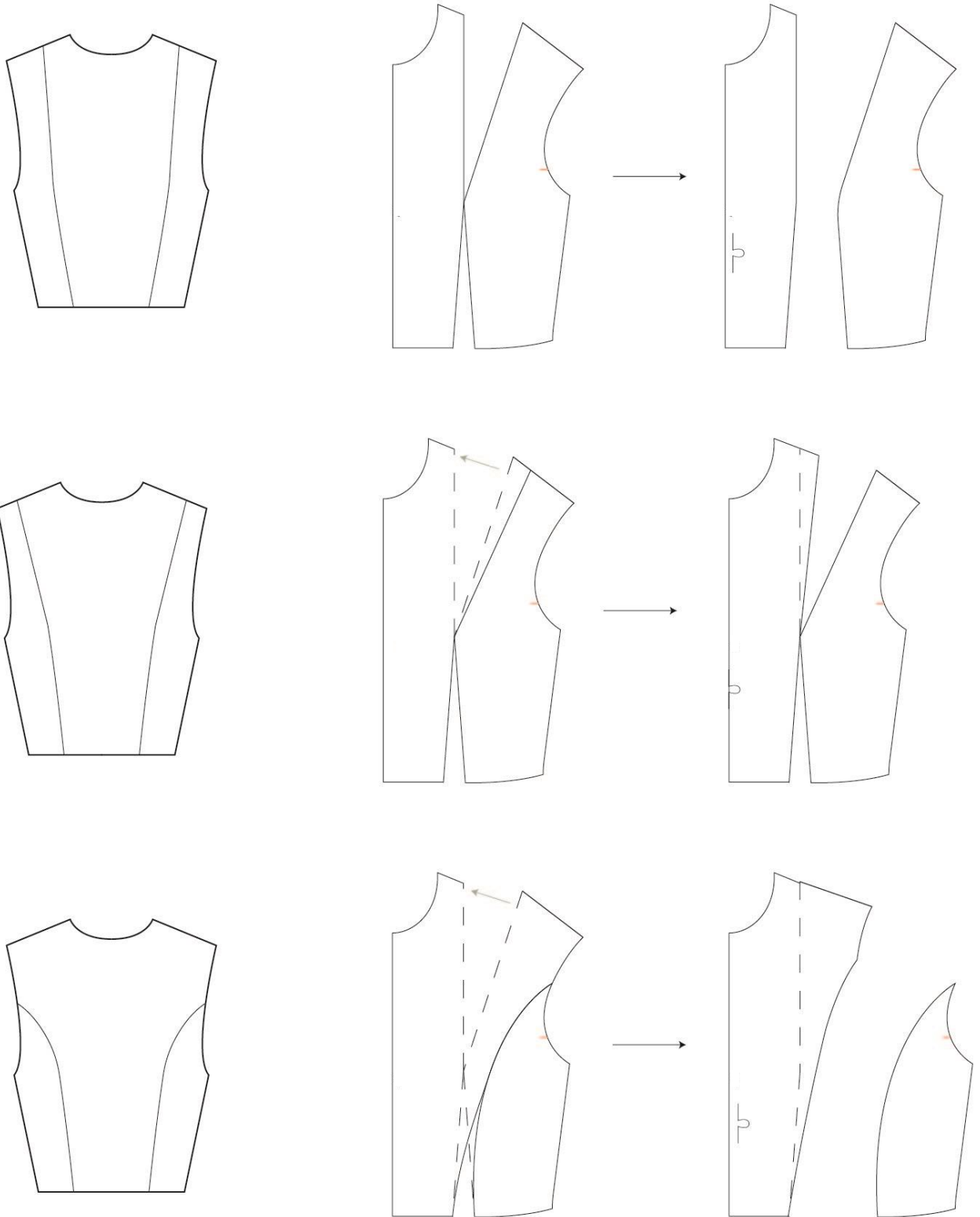
- Pen
- Shape Builder
- Rotate
- Scissors

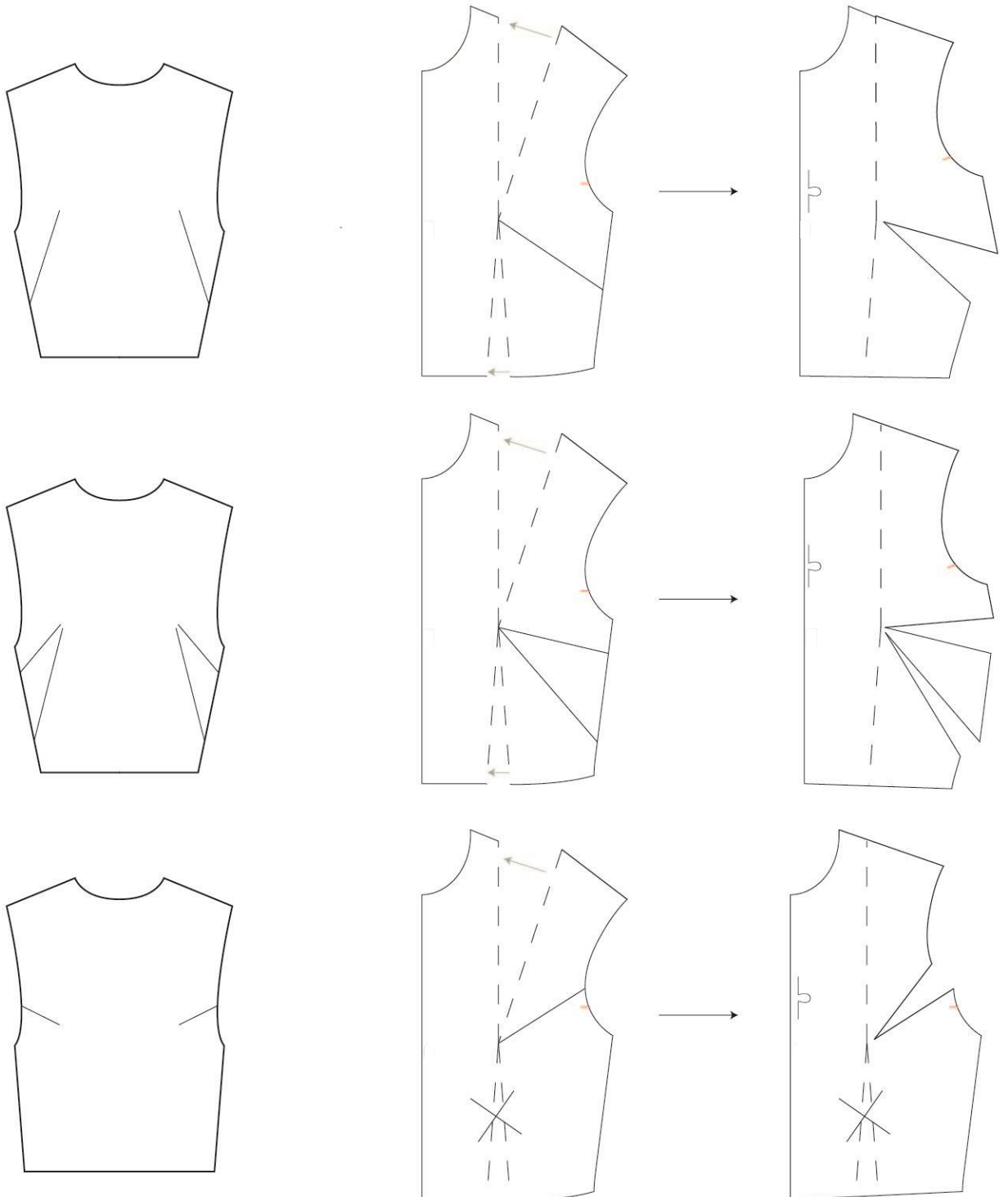
Use the basis dress pattern for your desired alterations.

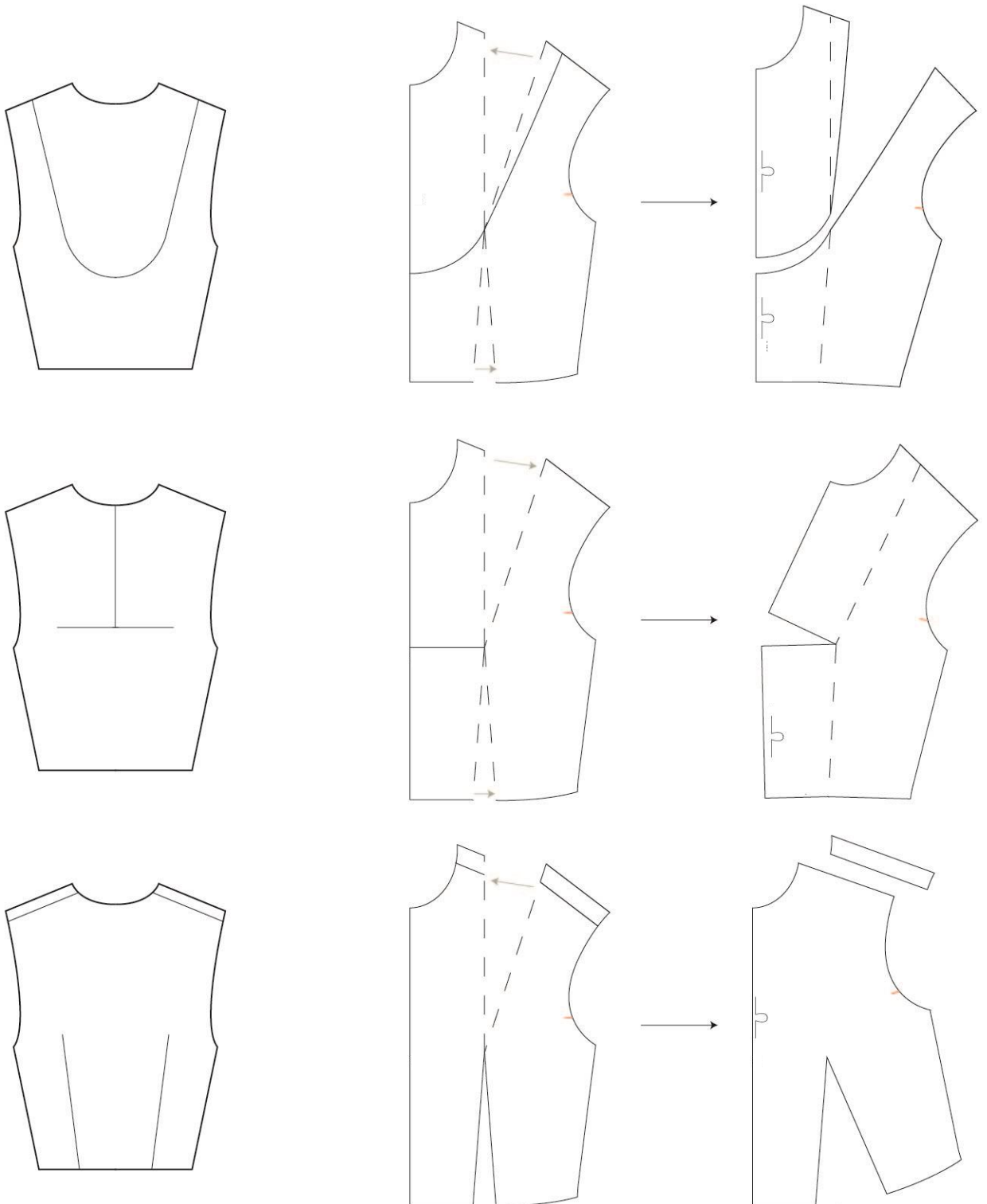
- If a dart point is at the bust point, move the dart point 2 cm away from the bust point. (This does not apply to panel seams.)
- Round sharp angles on panel seams to make the seam smooth. Select the anchor point on an angle with the Direct Selection tool [**A**]. Drag the small circle to round the corner.
- Check that both panel seams are the same length.

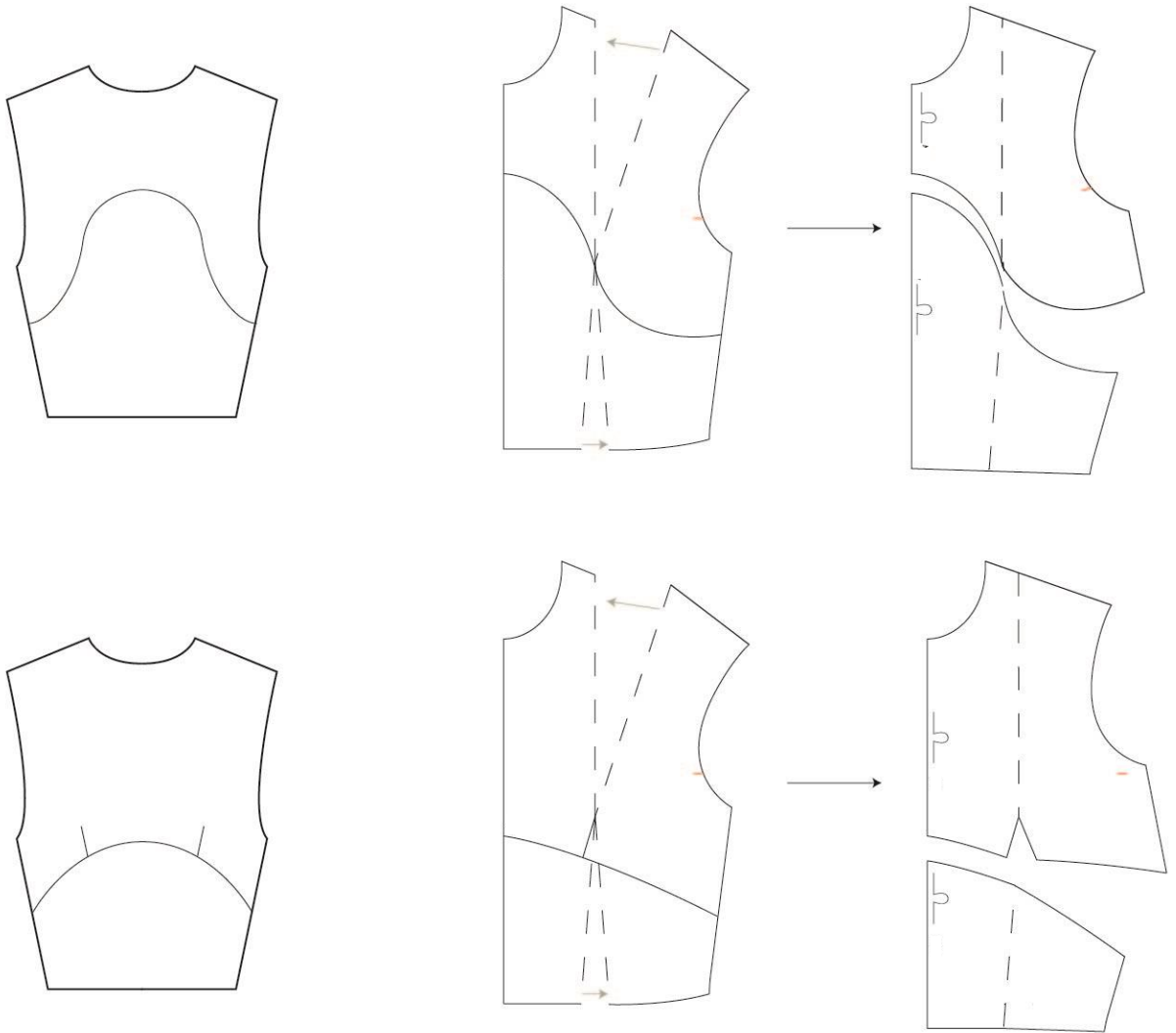


Alteration of waist length tops The front panel:



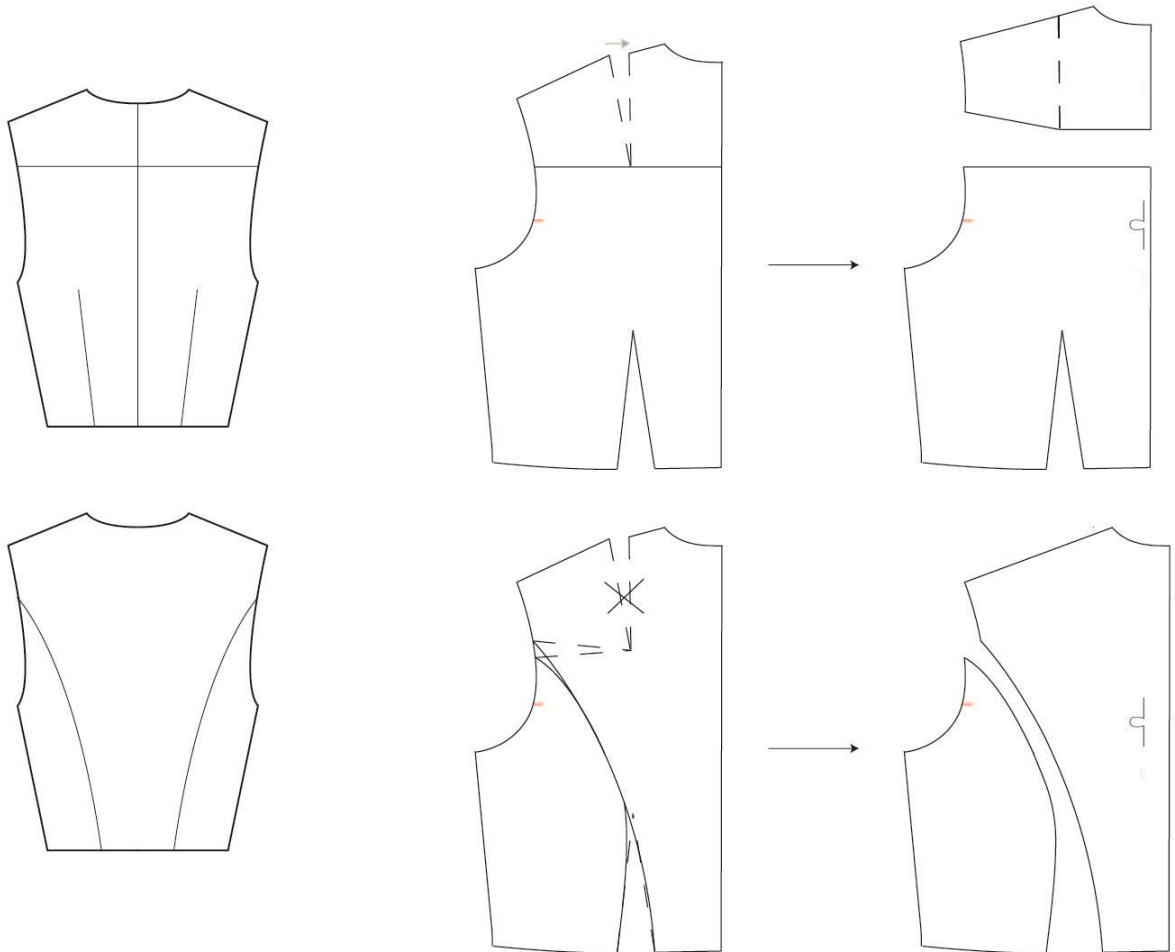








The back panel:





Alteration of hip length tops

