



## Basic top pattern including design ease

---

The basic dress pattern can be changed to a top pattern by simply raising the hemline. However, if you want the top to be wider, you will need to add design ease.

*Note: Design ease (sometimes called style ease or fashion ease) is a type of ease that is added to a garment by the designer to achieve a particular look or style.*

In this lesson you will learn how to add ease to an existing basic pattern without starting from scratch.

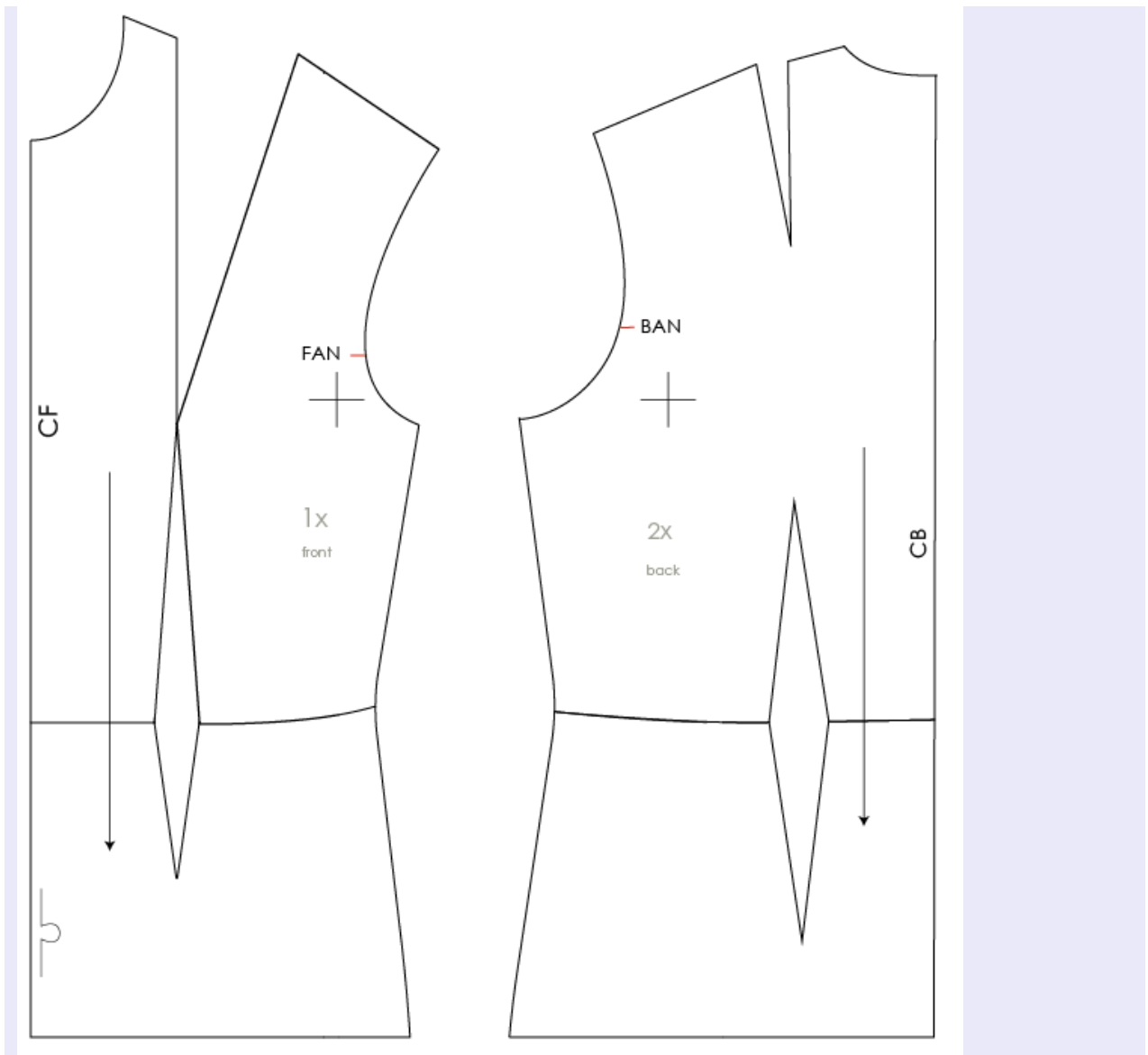
### **Modifying the basic dress pattern for the basic top pattern + adding design ease**

Follow the steps below for both the front and back:

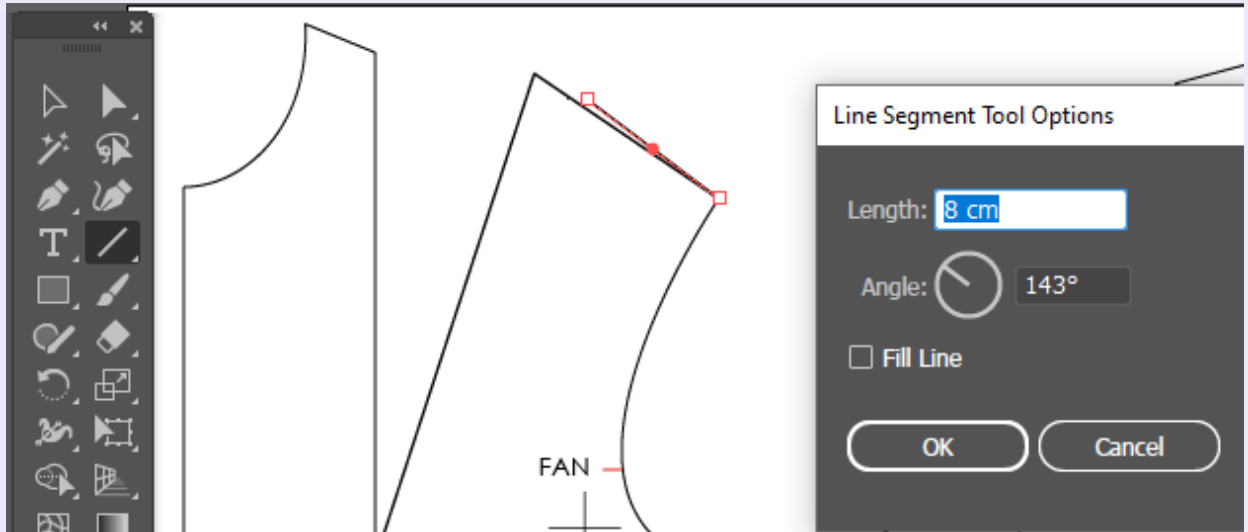
- Take the basic dress pattern.
  - Draw a horizontal line at hip level. This will be the new hemline.
  - Mark the shoulder line at **8 cm** from the armhole.
  - From this point, draw a vertical line to the new hemline. Cut the pattern.
  - Leave a gap of **1 cm** between the 2 pattern pieces.
  - Redraw the shoulder line with a straight line. Check that the length of the back shoulder line is still 0,5 cm longer than the length of the front shoulder line. (The 0,5 cm difference will be smoothed out during sewing. The 0,5 cm extra size on the back panel gives extra room for the shoulder blade.)
- In the Menu bar, go to **File > Open** to open the file of the basic dress pattern.
  - Make the “Baselines” layer visible by clicking the eye icon next to the layer in the Layers panel.
  - Click on the hip line with the Selection tool [**V**] to select it.
  - Reveal the sublayers of the “Baselines” layer by clicking on the arrow to the left of the layer.
  - The sublayer containing the hip line has a small blue square.



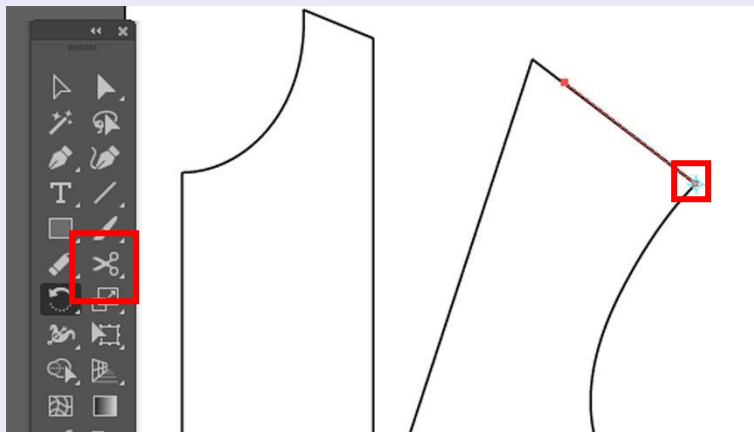
- Hide all the sublayers of the “Baselines” layer, except for the hip line, by dragging over the eye icons.
- Select the Scissors tool [**C**] from the Tools panel.
- Click on the CF line at hip level.
- Repeat for the side seams and the CB line.
- Select the Selection tool [**V**] from the Tools panel.
- Drag a 'frame' around the cut line segments below the hip line to select them.
- Click the **Backspace** or **Delete** key to remove them.
- Select the Line Segment tool [**\**] from the Tools panel.
- Click on the CF at hip level, hold the left mouse button, hold the **Shift** key and drag towards the side seam to create a horizontal line. Release the left mouse button. Release the **Shift** key.
- Click on the CB at hip level, hold the left mouse button, hold the **Shift** key and drag to the side seam to create a horizontal line. Release the left mouse button. Release the **Shift** key.



- Hide the “Baselines” layer by clicking the eye icon next to the layer in the Layers panel.
- Click on the shoulder point with the Line Segment tool [↵]. The Line Segment Tool Options window opens.
- In the Line Segment Tool Options window, for **Length** type: **8 cm**. Click OK



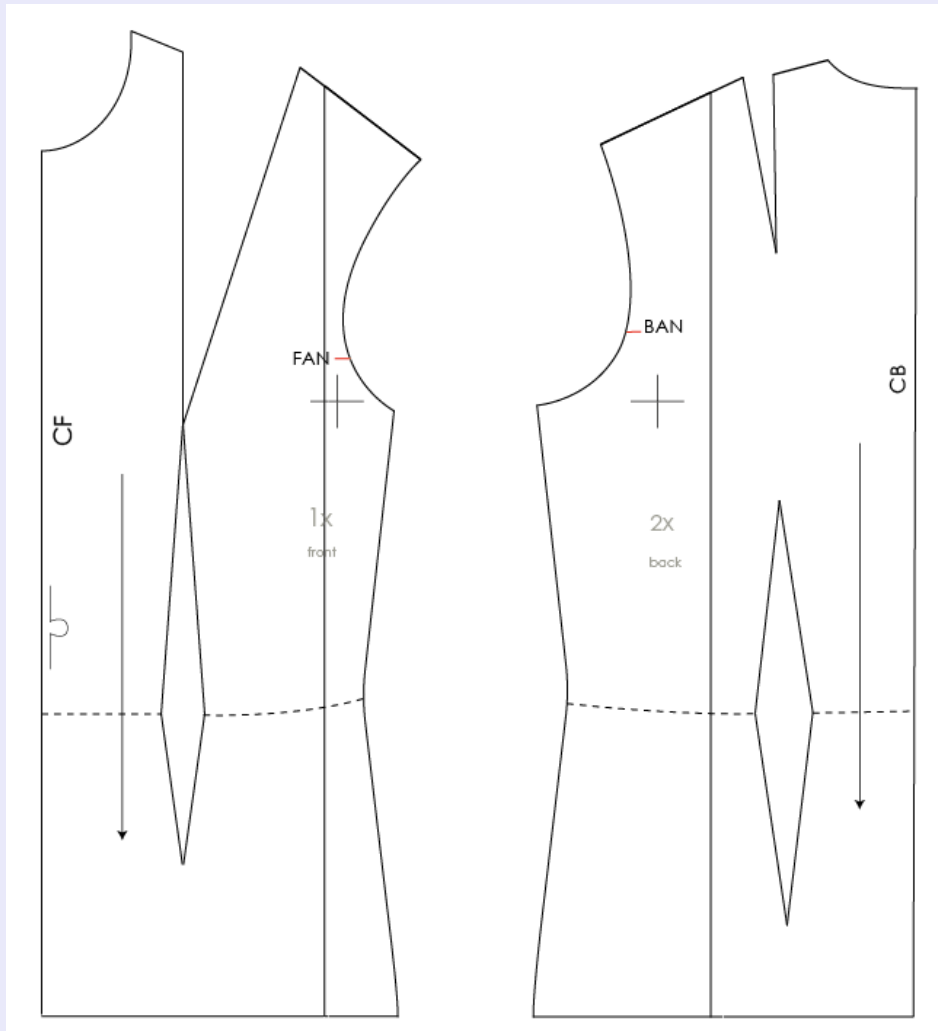
- Select the Rotate tool [R] from the Tools panel.
- Click on the shoulder point with the Rotate tool [R]. This is the rotation point. (The Smart Guides will indicate if the cursor is correctly positioned. The pink word “anchor” or “intersect” appears.) Drag until the line is in the same direction as the shoulder line. (See the image below.)



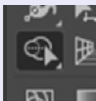
- Repeat for the back panel.
- Select the Line Segment tool [\] from the Tools panel.
- Click on the left side of the new line on the front panel (the pink word “anchor” appears, hold the left mouse button, hold the **Shift** key and drag to the hip line to create a vertical line. Release the left mouse button. Release the **Shift** key.



- Repeat for the back panel.



- Click shortcut **Ctrl A** (Mac: Command A) to select the entire pattern.
- In the Tools panel, select the Shape Builder tool [**Shift M**] (see image below).

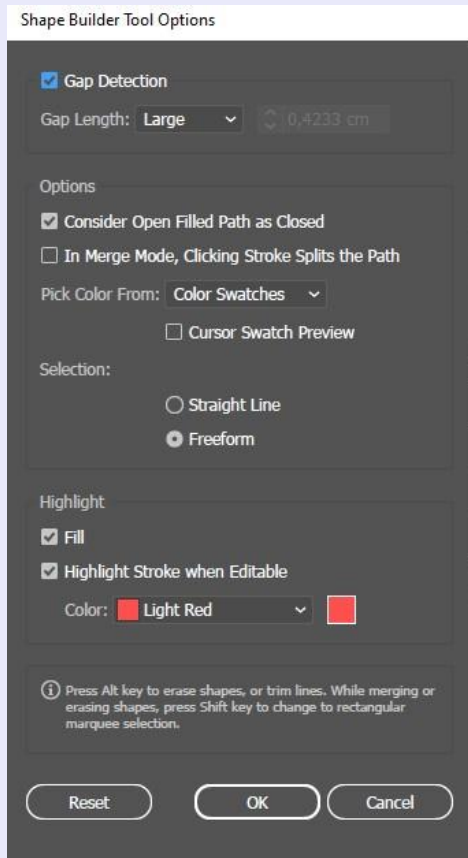


First check the settings of the Shape Builder tool [**Shift M**]:

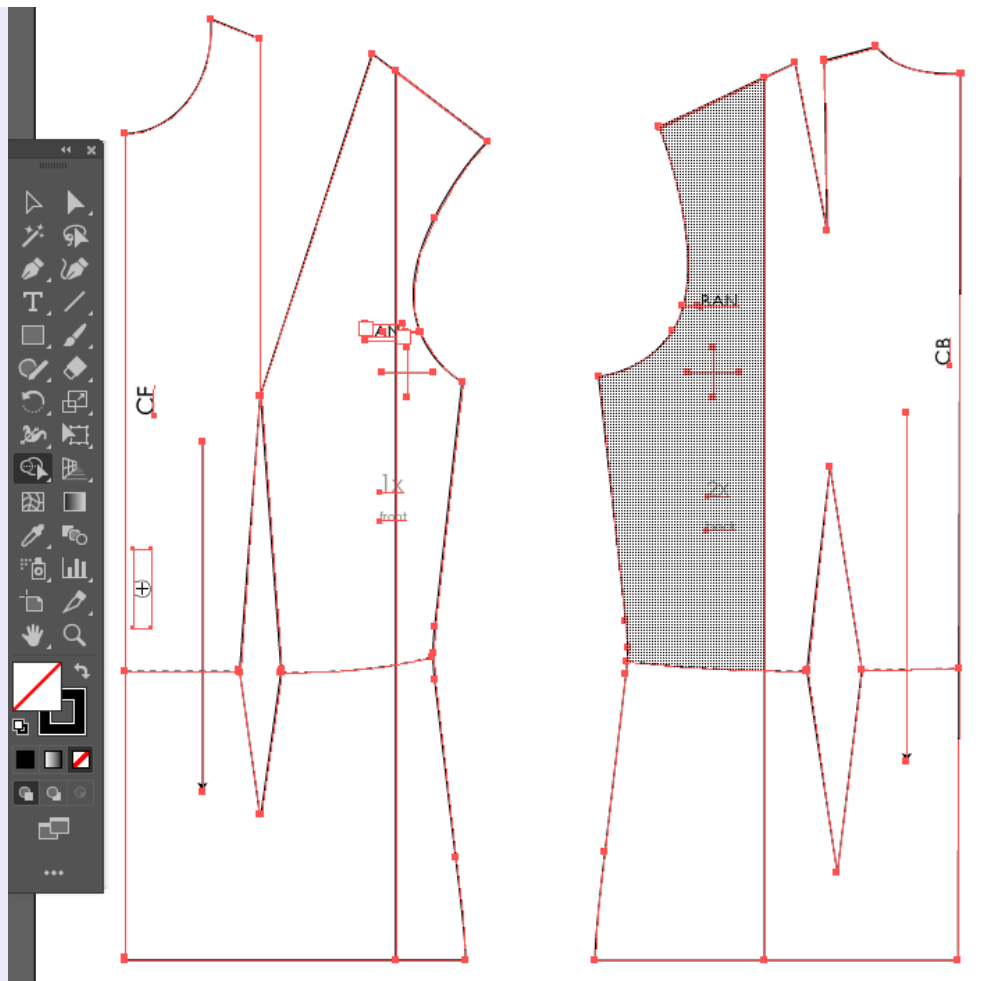
- In the Tools panel, double-click the Shape Builder tool icon to open the Shape Builder Tool Options panel.



- Check that the “Gap Detection” option is enabled and select “Large” for the “Gap Length” option (see the image below). Click OK.

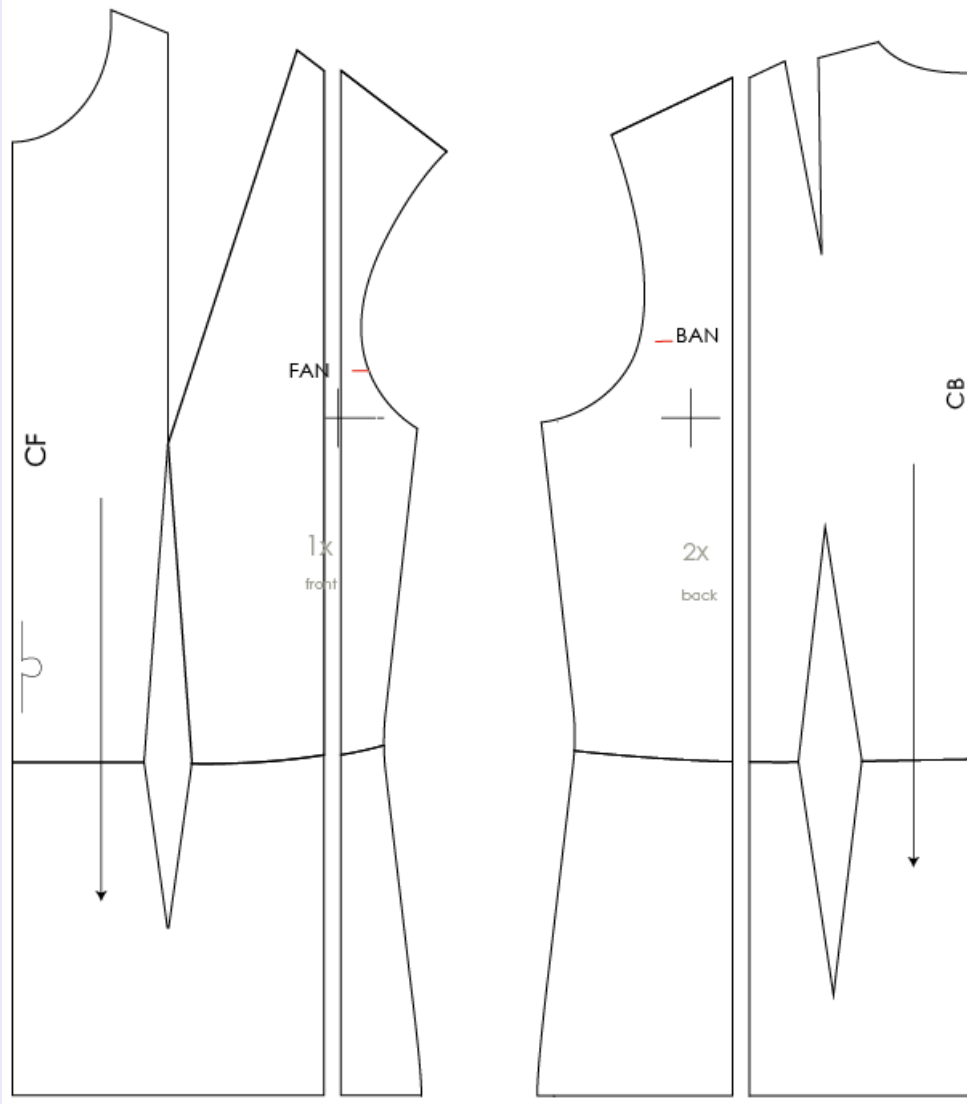


- Click in each part of the pattern to divide the pattern into separate pieces.



- Select the Selection tool [V] from the Tools panel.
- Drag a 'frame' around the 2 pattern pieces on the side of the front panel to select them.
- Press **Enter** to open the Move panel. For **Horizontal** type: **1 cm**. For **Vertical** type: **0 cm**. Click **OK**.
- Drag a 'frame' around the 2 pattern pieces on the side of the back panel to select them.

Press **Enter** to open the Move panel. For **Horizontal** type: **-1 cm**. For **Vertical** type: **0 cm**. Click **OK**.

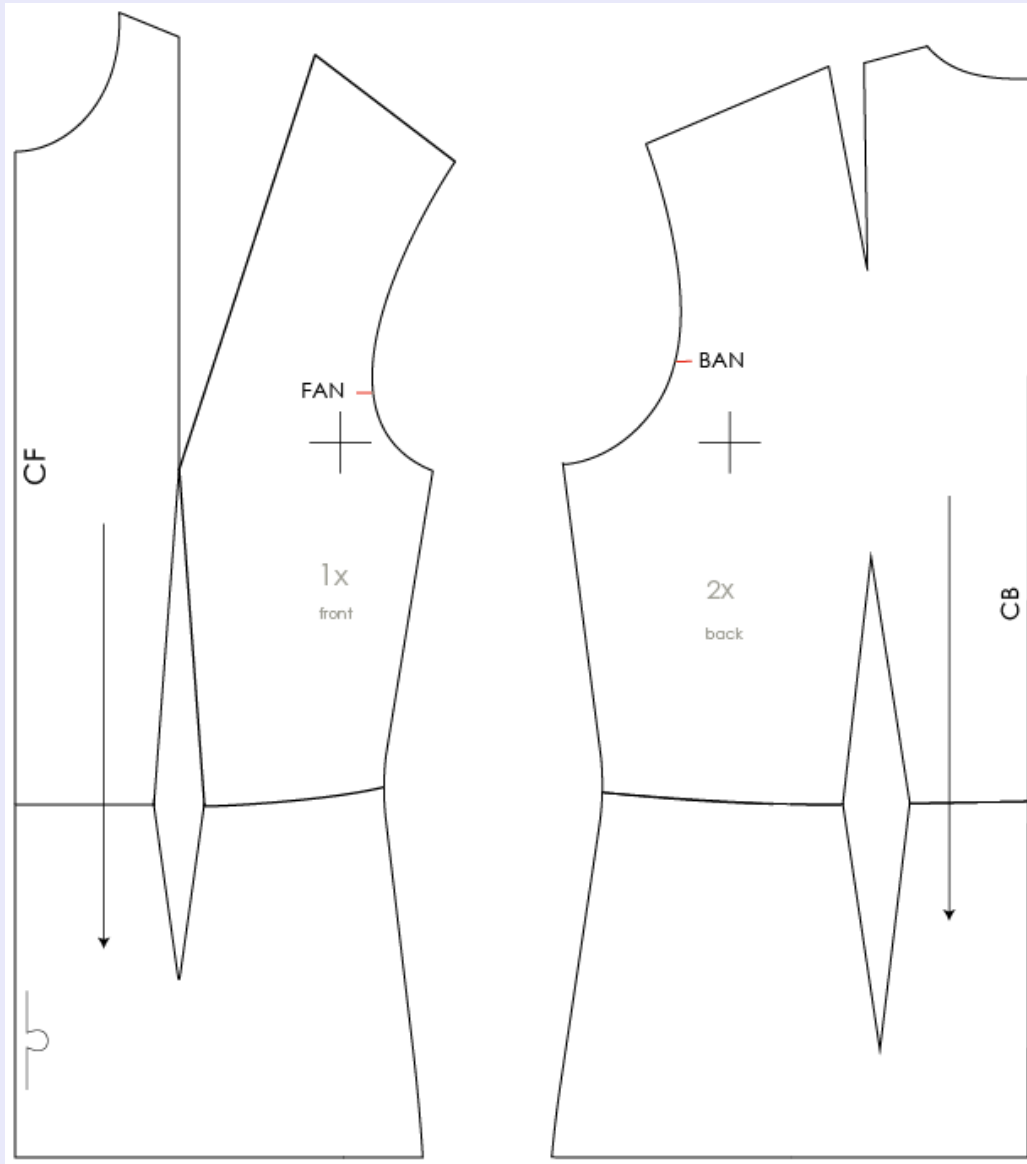


- Redraw the shoulder line with a straight line using the Line Segment tool [L].
- Repeat for the back panel.
- Select the Selection tool [V] from the Tools panel.
- Click on the former shoulder line to select it.
- Click the **Backspace** or **Delete** key to remove it.
- Repeat for the back panel.
- If necessary, correct the hemline using the Direct Selection tool [A].





- With the Direct Selection tool [**A**], click on a vertical line segment used to cut the pattern.
- Click the **Backspace** or **Delete** key to remove it.
- Repeat for the other vertical line segment used to cut the pattern.



- To check the size of the shoulder line:
  - Click on the shoulder line on the front panel with the Selection tool [**V**] to select it.

*If the shoulder line is connected to another line, cut it first.*

*To cut the line:*

*Click on the corner of the shoulder line with the Scissors tool [**C**] to cut the line*



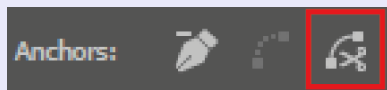
segments.

**Or...**

In the Tools panel, select the Direct Selection tool [**A**].

Click on the corner of the shoulder line to select it.

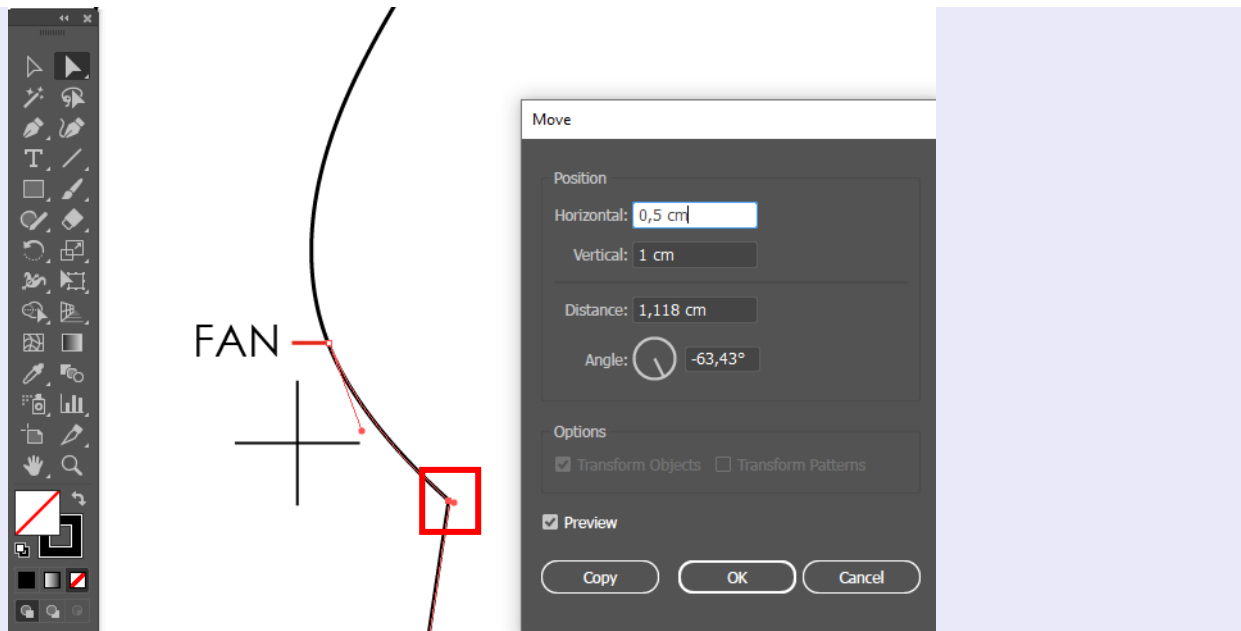
Then click on the third "Anchors" icon (see image below) in the Options Bar or Properties Panel to cut the line segments.



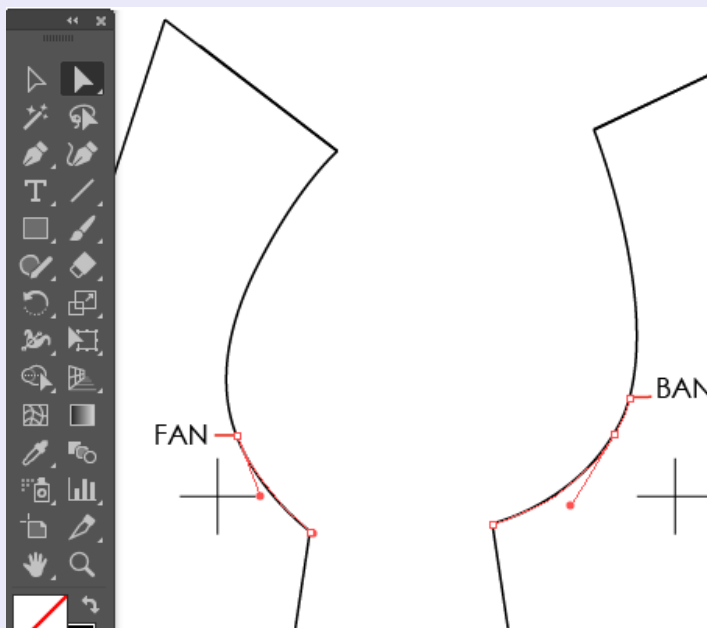
Repeat for the other corner.

- In the **Document Info panel > extra options > Objects**, check the length of the shoulder line. Note the value.
- Repeat for the shoulder line of the back panel.
- Check that the length of the back shoulder line is still 0,5 cm longer than the length of the front shoulder line. (The 0,5 cm difference will be smoothed out during sewing. The 0,5 cm extra size on the back panel gives extra room for the shoulder blade.)
- Lower the armhole on the front and the back panel by **1 cm** and move them **0,5 cm** beyond the side seam.
- Redraw the armholes.
- Redraw the side seams. Check that both side seams are the same length.
- Make the pattern pieces neat again.

- Select the Direct Selection tool [**A**] from the Tools panel.
- Drag a 'frame' around the anchor points in the lower corner of the armhole of the front panel to select them.
- Press **Enter** to open the Move panel. For **Horizontal** type: **0,5 cm**. For **Vertical** type: **1 cm**. Click **OK**.



- Drag a 'frame' around the anchor points in the lower corner of the armhole of the back panel to select them.
- Press **Enter** to open the Move panel. For **Horizontal** type: **-0,5 cm**. For **Vertical** type: **1 cm**. Click **OK**.
- If necessary, correct the armholes using the Direct Selection tool [**A**], so that the lines are smooth.



- Your pattern is finished!

